

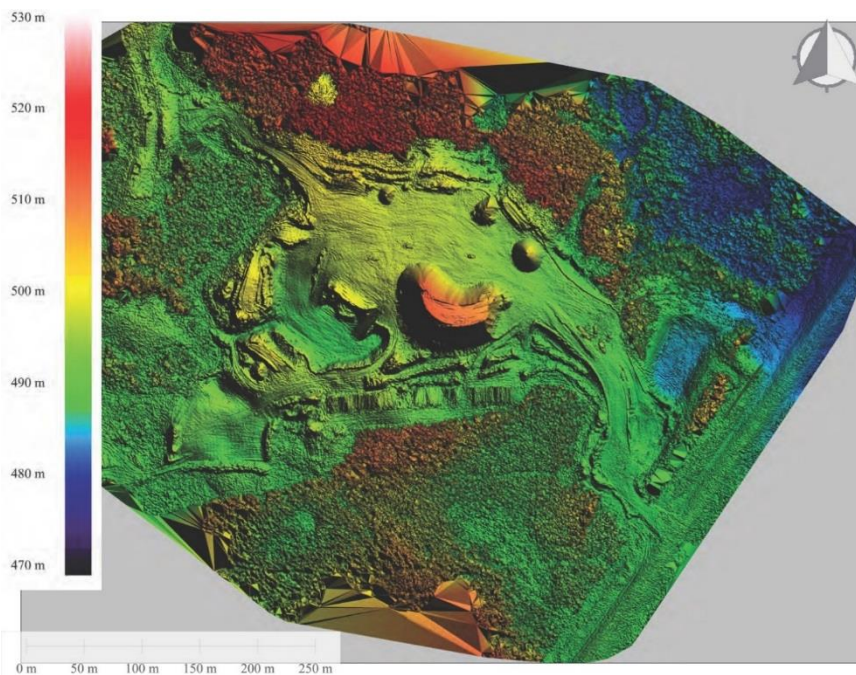
Drone Mapping and Aerial Surveying Services



Designed by SenseFly in Switzerland, the eBee drone produces high-resolution aerial photos and geo-referenced ortho-mosaic 3D contour maps to scale.

The ortho-mosaic is a seamless merging of the aerial photos taken by a pocket sized digital onboard camera.

In keeping with the Swiss tradition for clockwork precision, the eBee can produce a highly accurate digital surface model (DSM) by taking ground sample measurements every 1 to 3 cm.



This can produce a volume survey for stockpiles and excavations accurate to within 3 cm in the horizontal and 5 cm in the vertical. The 3D images and aerial photos are an excellent tool for planning and showing baseline conditions, ground disturbance and progressive reclamation. It can be used for various industries:

- agriculture & farming
- construction
- engineering
- mining operations.



The technology is unobtrusive. A 100 ha (250 acre) area can be flown in 45 minutes with minimal disturbance to active work site.

Constructed from lightweight and durable Styrofoam, the drone contains multiple safety features including automatic emergency landing at a pre-programmed landing zone in case of:

- loss of data-link with the laptop ground control station,
- low battery levels, or
- hazardous weather such as high winds.

The eBee has been tested in temperatures ranging from -15°C to 35°C and its electronics are designed to work in temperatures ranging from -20°C to 50°C.



Additionally, our drone operators receive Civil and Commercial UAS Training Certification from seasoned pilots at the Canadian Centre for Unmanned Vehicle Systems. We are authorized to fly the drone under a Special Flight Operations Certificate (SFOC) from Transport Canada and have been operating since 2014.

Aerial photos and 3D contour maps can be processed in 24 hours, and we can produce poster sized images. **Call today 780-465-5696!**